

# LEL BOLO

LEL Larry E. Coggins, Jr.



## Getting to know the Liaisons .... The Series



In the December 2012 issue of the *LEL Bolo*, we told you about the ongoing cross training of the LEL Team. Each of the seven liaisons are not only responsible for their territory, but are also tasked with managing projects, overseeing data reports to NHTSA, and coordinating the many Challenges and Campaigns that run annually. In an effort to provide you, our customer, with the best possible service with no interruptions in the event of an emergency or unanticipated absence of one of the team, our mission in 2013 and 2014 is to streamline the process behind the scenes in regards to cross training the entire staff. Part of this initiative is for you all to get to know each of the seven LELs a little better.



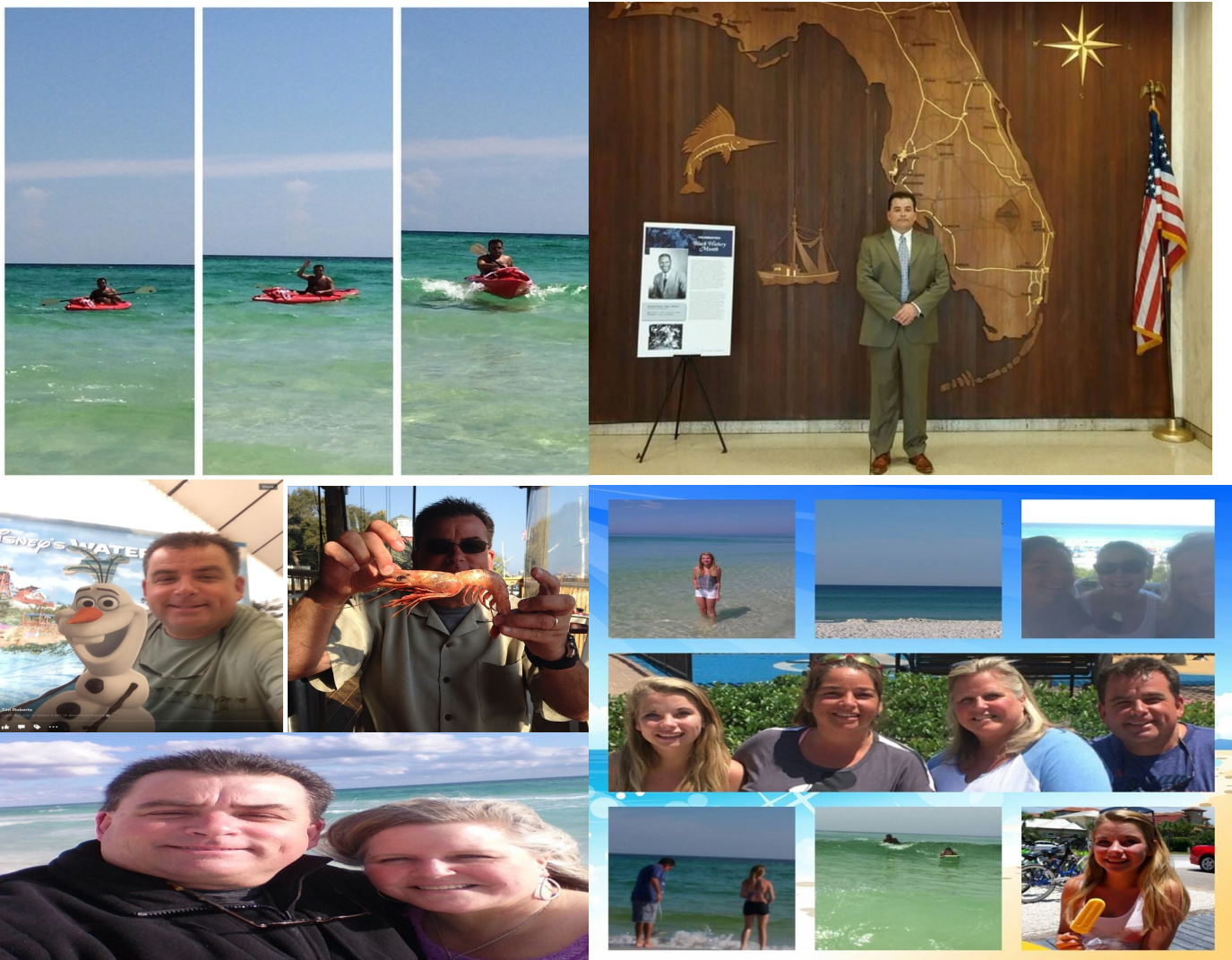
This month's spot light is on one of the newest members to join the Liaison Team, LEL Tim Roberts. Tim's territory covers the Florida Panhandle. This region ranges from extremely rural to the heavily visited Emerald Coast.

Tim began his career in law enforcement back in 1987 with the Hall County Sheriff's Office in Gainesville, GA situated to the Northeast of the Metro Atlanta area. During his tenure with the Hall Sheriff's Office, Time's passion for traffic enforcement and DUI apprehension became evident as he rose through the traffic team's ranks achieving the DUI Patrolman rank due in part to his vigorous attack on impaired motorist in this area of Georgia.

Contact Your Liaison:  
[southwestfloridalel@gmail.com](mailto:southwestfloridalel@gmail.com)  
 850-728-2813  
[www.floridalel.org](http://www.floridalel.org)

Tim's experience and expertise in this field lead to his acceptance of a position with Georgia's Governor's Office of Highway Safety in Atlanta where he was the State Coordinator of their Law Enforcement Services section that is the Georgia equivalent to Florida's LEL Program. After approximately 10 years in this position, Florida's sunshine and water was calling their native son home and Tim and his family moved back to the Sunshine State where he took over the Panhandle Region for the Florida LEL Office.

Tim and his wife Robyn reside in the Destin area along the emerald coast where they enjoy their love of Florida's beaches and miles of coast. Their grown daughters, Hope and Emma, both reside in Central Florida where the Robert's family visits often enjoying all that they missed about our great state!





## 2014 Florida Law Enforcement Challenge

The Law Enforcement Liaison Program reminds you that the 2014 Law Enforcement Challenge is underway! Agencies are encouraged to visit with your LEL to maximize your ability to recognize officers, create a comprehensive safety program, involve the community in safer driving, and beef up training of personnel in traffic enforcement and safety.



## 2014 Florida DUI Challenge

The Florida DUI Challenge continues to encourage agencies to participate and conduct DUI Checkpoints, Saturation Patrols, and Heightened Awareness regarding alcohol related crashes in known areas of alcohol related arrests and crimes. In addition to the ongoing Florida Law Enforcement Challenge, the 2014 DUI Challenge is also running year long to reduce the number of alcohol related injuries and fatalities on Florida's roads!



## 2014 Florida Motor Unit Challenge

Planning and preparation for the 2014 Florida Motor Unit Challenge is underway, and based on last year's participation and unveiling of the traveling Motor Unit Challenge Cup, this year's two month campaign promises to be bigger and better than ever! Stay tuned for more information from your LEL.



## Labor Day 2014—Drive Sober or Get Pulled Over

The Labor Day DUI enforcement period will run from August 13, 2014, through September 1, 2014, with electronic reporting to the FL LEL Program by September 15, 2014.

Visit <http://www.trafficsafetymarketing.gov/laborday2014> for more information and creative ways to spread the word about this very dangerous time frame on Florida's roadways!



### Daily Fatality Report

Year-to-Date Traffic Fatality Report as of August 1, 2014, based on preliminary data supplied by the Florida Department of Highway Safety & Motor Vehicles.

