



The LEL BOLO

October Edition - 2015

2015 Halloween DUI Crackdown

The next in a series of DUI campaigns will be the 2015 Halloween Impaired Driving Crackdown.

Visit <http://www.trafficsafetymarketing.gov/Halloween> for all of your Halloween themed DUI materials, press releases, and other creepy stuff to keep the ghost and goblins at bay this season!



Inside This Issue

Halloween DUI Crackdown	1
Florida MUC and CIOT Challenge	2
Florida DUI and FLEC Challenge, Holiday DUI	3
Coordinator's Corner, Social Media, FPCA	4
Available Training, YTD Fatality Report	5

Florida Motor Unit Challenge



The 2015 Florida Motor Unit Challenge is just around the corner. During this two month challenge, motor units from across Florida will implement agency specific efforts to reduce traffic crashes, serious injury crashes and fatal crashes within their communities. This year's Challenge will provide the top twenty motor units with traffic safety, law enforcement equipment to improve upon their traffic safety programs. The top ten motor units will have a chance to crank the grand prize, a fully equipped 2016 police motorcycle. Stay tuned for more information from your Law Enforcement Liaison.

Florida Click It or Ticket Challenge

The Florida Click It or Ticket Challenge is getting ready to start. In an effort to raise safety belt compliance and reduce occupant protection related serious injuries and fatalities. This Challenge consists of three, two-week waves. The first wave will begin on November 17, 2015, and will end on November 30, 2015. The other two waves occur in March and May of 2016. The top three agencies in each size category will receive traffic safety, law enforcement equipment to improve upon their traffic safety programs. The first place agency will have a chance to turn the key for a fully equipped 2016 police vehicle. Stay tuned for more information regarding the March 2016 and the May 2016 dates.



Ok, pilgrim ... seat belt or ticket ... your choice ...

Florida DUI Challenge

There is still plenty of time left to beef up your agency's DUI enforcement. The DUI Challenge focuses on preventing alcohol related crashes, serious injury crashes, and fatalities within an agency's community. The DUI Challenge will provide the top three agencies in each size category with traffic safety law enforcement equipment. The first place agency will have a chance to turn the key for a fully equipped 2016 DUI vehicle!

Contact your LEL today for more information.



Florida Law Enforcement Challenge

There is still plenty of time to maximize your efforts in training, enforcement, and officer recognition for the calendar year 2015. Every traffic safety activity counts in this year's Florida Law Enforcement Challenge, so take this opportunity to pick your LEL's brain about where your agency can improve concerning traffic safety. During last year's FLEC, there were less than 1½ points separating some winners in various size categories. The top three agencies in each category will receive traffic safety law enforcement equipment. The first place agency will have a chance to turn the key for a fully equipped 2016 police vehicle.

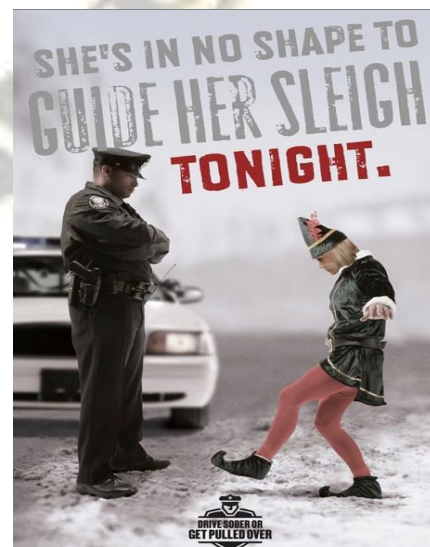


2015 Holiday Drive Sober or Get Pulled Over

The December 2015 *Drive Sober or Get Pulled Over* media work kit is available for the December campaign. Take the opportunity to tap into the National Highway Traffic Safety Administrations' (NHTSA) resources to provide a safer driving environment this holiday season.

For more information visit:

<http://www.trafficsafetymarketing.gov/HolidaySeason>





A message from the Florida
LEL Coordinator, Kate Nelson

Coordinator's Corner

Our bi-monthly newsletter is designed to keep our law enforcement agencies and associates current with the traffic safety initiatives throughout our state. Our Law Enforcement Liaison team strives to keep our partners informed of upcoming campaigns, traffic safety training, and year to date fatality reports, as well as recap spotlighted events.

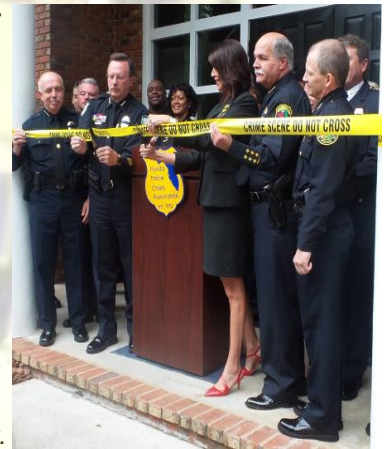
The holiday season is the perfect time to focus on our goal of driving down fatalities. The Law Enforcement Liaison team is available around the clock to help law enforcement agencies and our partners with their traffic safety needs. From assisting with grant funded training, to helping out at a DUI checkpoint, our team of diverse, professional liaisons are here to help. Visit <http://www.floridalel.info> for more information about your LEL team.

Florida Police Chiefs Association Legacy Building

The Florida Police Chiefs Association (FPCA) officially opened their new Tallahassee headquarters on September 24th with a ribbon cutting ceremony, remarks from Association President, Chief Brett Railey and Executive Director, Amy Mercer. The new buildings primary focus is to provide new training facilities for law enforcement executives throughout the state.

Congratulations FPCA!

FPCA President, Chief Brett
Railey with Executive Director
Amy Mercer at the Legacy
Building ribbon cutting ceremony.



FPCA President, Chief Brett
Railey with FDOT Chief Safety
Officer Lora Hollingsworth and
Law Enforcement Liaison
Larry Coggins

Are We Facebook Official?

Are You Following us on Twitter?

If you haven't already done so, like us on Facebook and participate in **Traffic Trivia Tuesday**, and **Throw Back Thursday**. The LEL Program is also working on a new project that will recognize our heroes throughout the state, stay in touch with your local LEL for more information!

Follow us on Twitter @FloridaLEL
#OneTeam.OneGoal.SaveLives.





FDOT – Grant Funded Training

A limited number of tuition free grants are available through the Florida Department of Transportation for Florida law enforcement officers to attend the courses below.



www.iptm.org to register

<u>IPTM Course</u>	<u>Date</u>	<u>Location</u>
--------------------	-------------	-----------------

Visit [IPTM Tuition Free Training](#) for an updated list of tuition free catalog courses.



Visit [Florida Public Safety Institute](#) to register for the list of courses below.

<u>FPSI Course</u>	<u>Date</u>	<u>Location</u>
--------------------	-------------	-----------------

Standard Field Sobriety	10/21/15-10/23/15	Flagler County SO, Bunnell
ARIDE	11/02/15-11/03/15	FHP Troop C – Tampa
Motor Cycle Crash Investigation	11/09/15-11/13/15	FPSI, Havana
Crash Scene Mapping w/Speed Lasers	12/14/15-12/18/15	Miami Police College, Miami
SFST	02/15/16-02/17/16	Palm Beach Gardens PD
ARIDE	02/18/16-02/19/16	Palm Beach Gardens PD
Traffic Crash Reconstruction	02/29/16-03/11/16	NW FL State College, Niceville



There are 364 more traffic fatalities in Florida in 2015, than the same time period in 2014. From January 1st to October 1st.