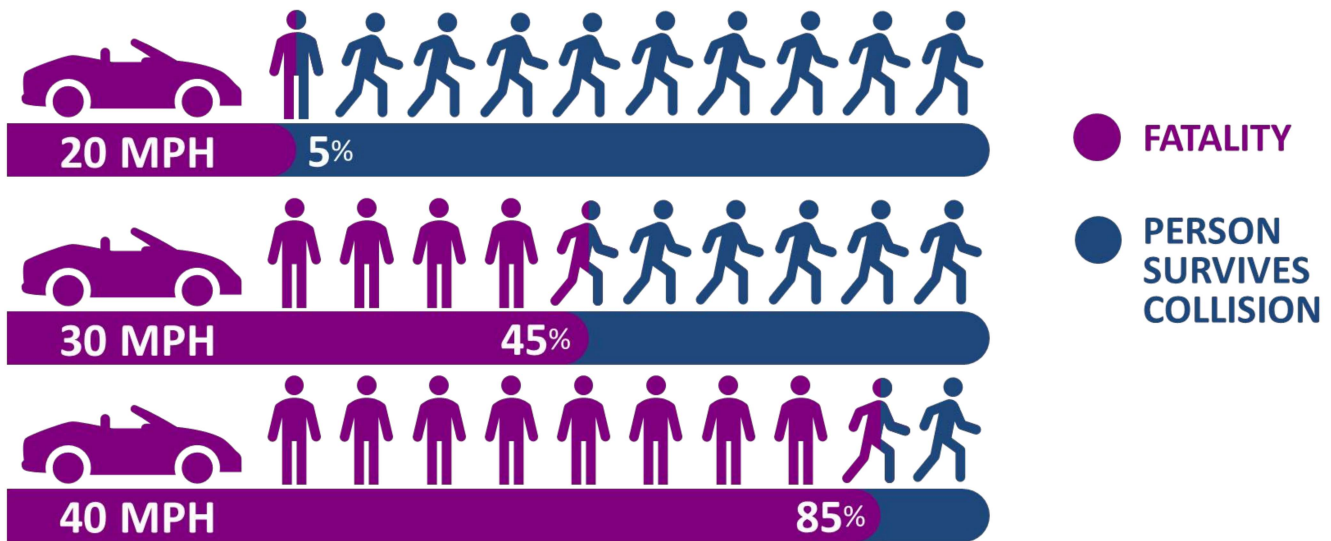


## Speeding and Aggressive Driving Overview

The adage “speed kills” is certainly true with traffic crashes. A pedestrian hit by a vehicle traveling 20 miles per hour has a 95 percent chance of surviving while a pedestrian struck by a vehicle traveling 40 miles per hour only has a 15 percent chance of surviving.<sup>1</sup>

*If hit by a car traveling...*



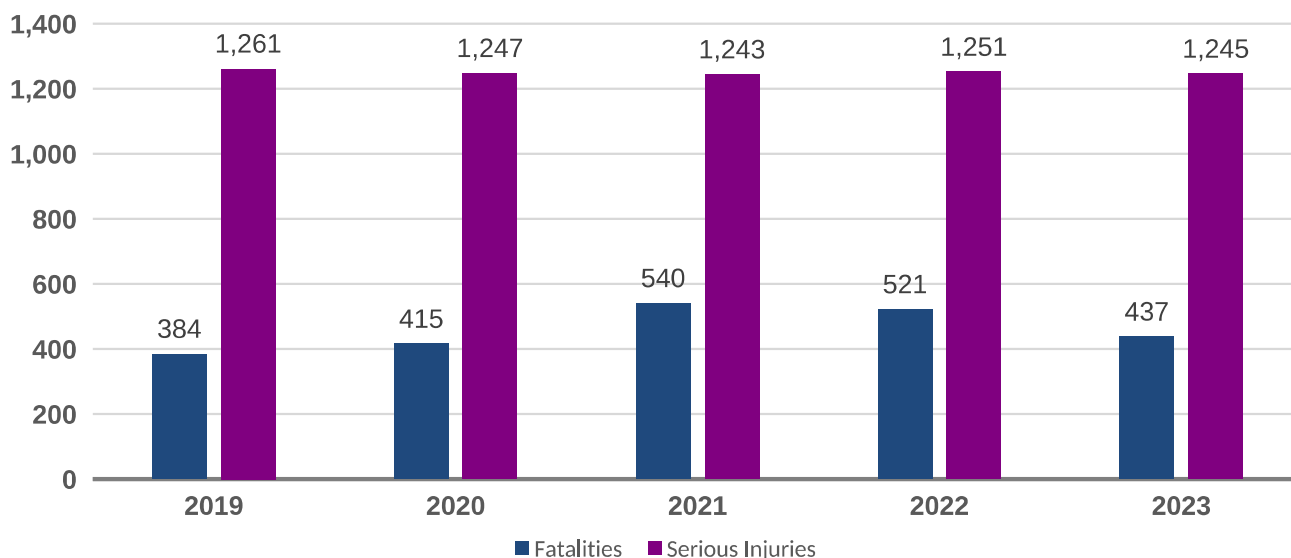
For more than two decades, speeding has been involved in approximately one-third of all motor vehicle fatalities. In 2022, speeding was a contributing factor in 29% of all traffic fatalities (NHTSA). In 2022, speeding killed 12,151 people nationally.

<sup>1</sup> Source: NTSB (2017) Reducing Speeding-Related Crashes Involving Passenger Vehicles

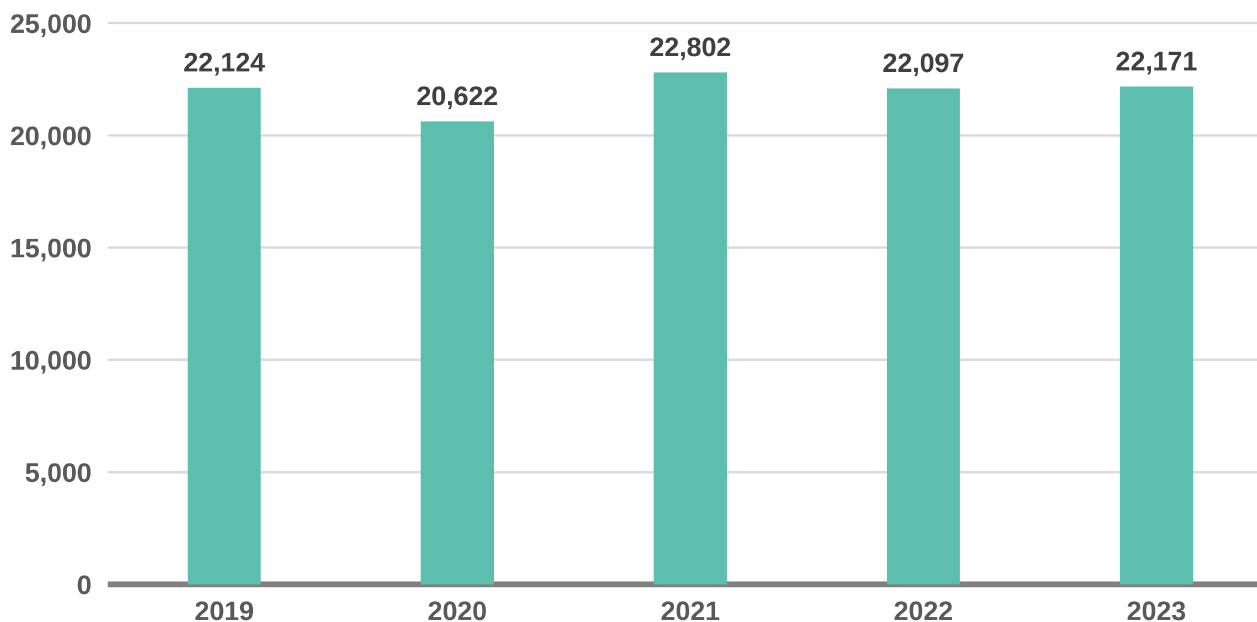
## Florida Trends

Since 2019, serious injuries involving speeding and aggressive driving have remained flat while fatalities have increased by 13 percent. This is an alarming trend since overall serious injuries have declined 22 percent and fatalities remain about the same as they were in 2019.

### FATALITIES & SERIOUS INJURIES INVOLVING SPEEDING AND AGGRESSIVE DRIVING IN FLORIDA (2019-2023)



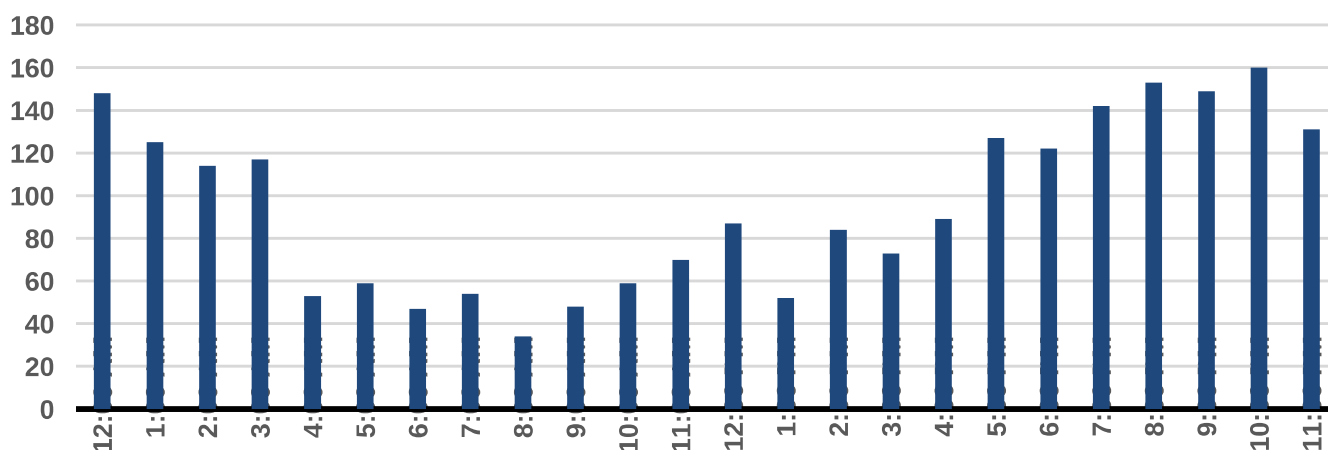
### CRASHES INVOLVING SPEEDING AND AGGRESSIVE DRIVING IN FLORIDA (2019-2023)



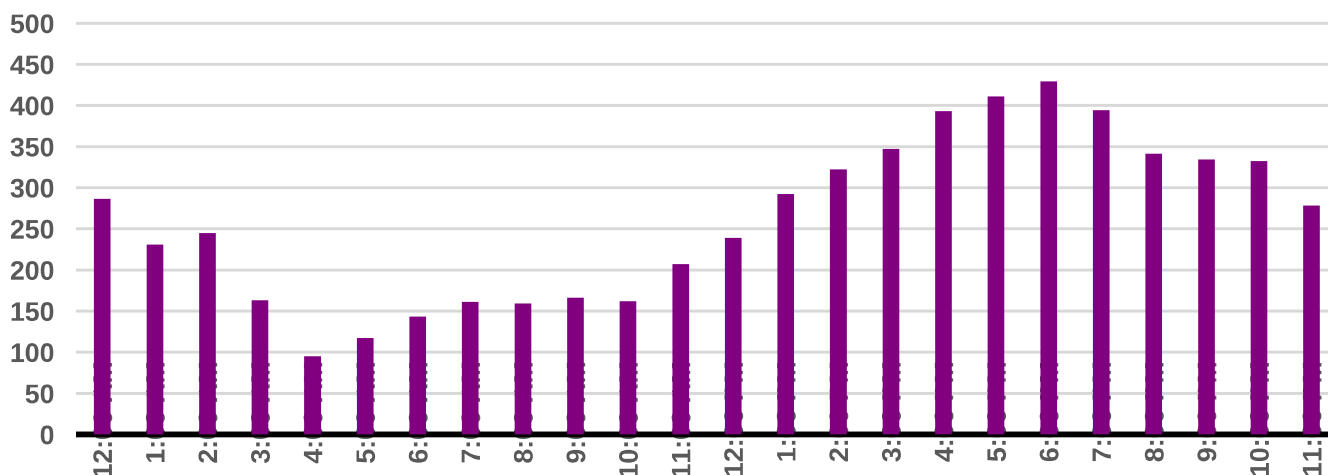
## Fatalities, Serious Injuries, and Crashes Involving Speeding and Aggressive Driving by Time of Day

Evaluating speeding and aggressive driving trends by time of day illustrates a high rate of crashes involving speeding and aggressive driving starting around noon and peaking at 5 PM before declining during the overnight hours. Serious injuries follow a similar pattern with a less significant decline in the overnight hours. Fatalities, however, are highest during the late evening and overnight hours.

FATALITIES INVOLVING SPEEDING AND AGGRESSIVE DRIVING BY TIME OF DAY (2019-2023)

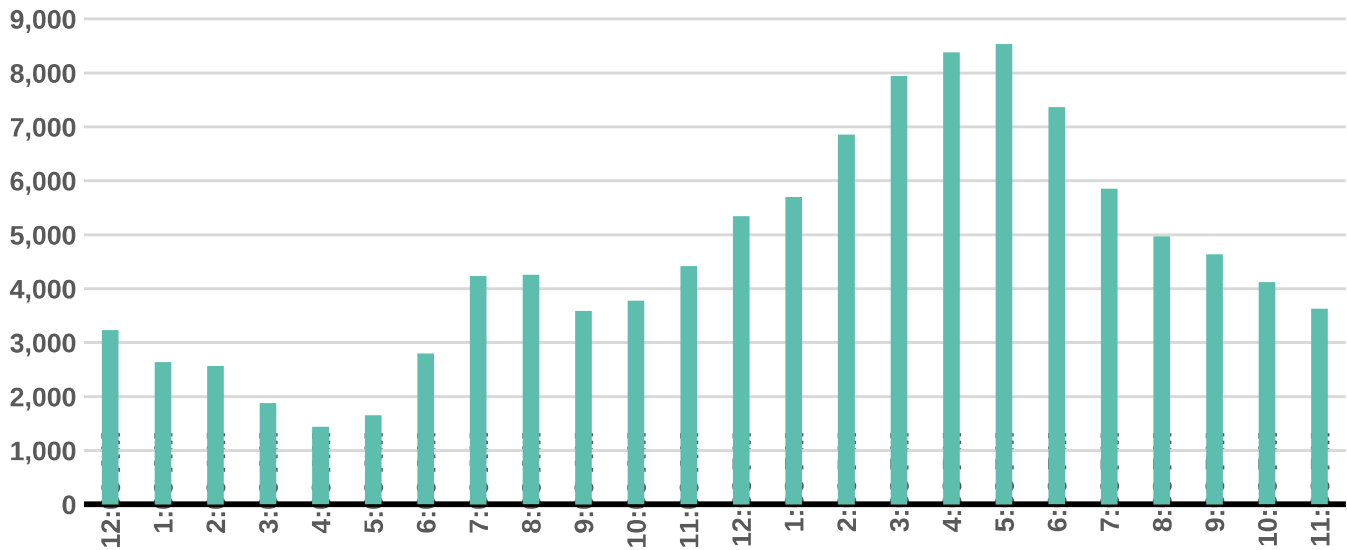


SERIOUS INJURIES INVOLVING SPEEDING AND AGGRESSIVE DRIVING BY TIME OF DAY (2019-2023)



## SPEEDING AND AGGRESSIVE DRIVING

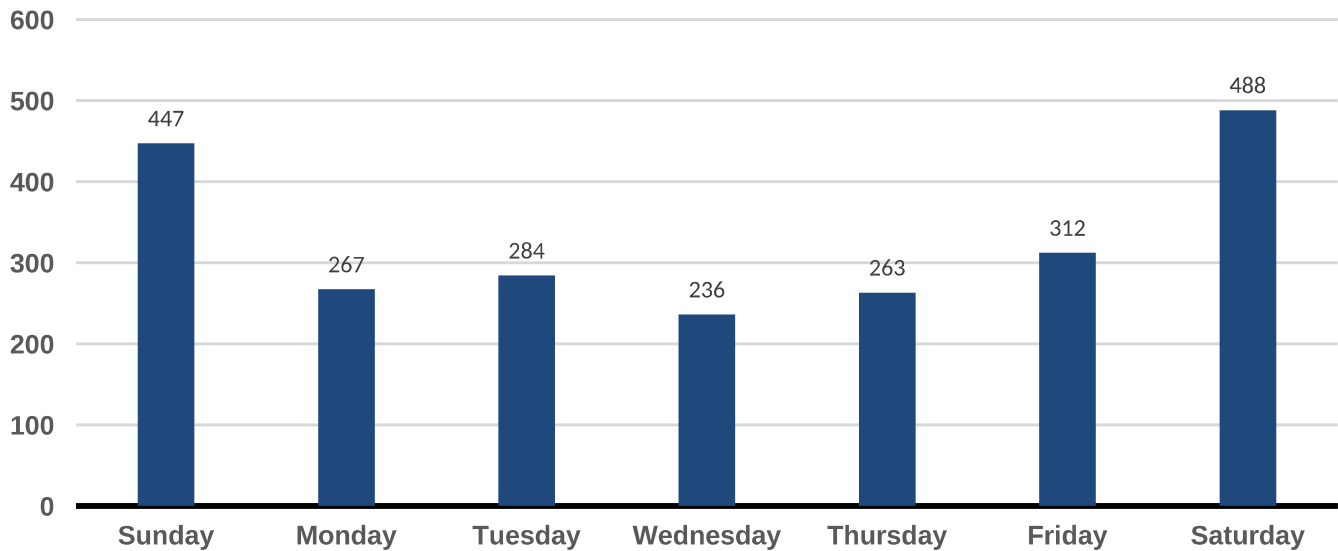
### CRASHES INVOLVING SPEEDING AND AGGRESSIVE DRIVING BY TIME OF DAY (2019-2023)



## Fatalities, Serious Injuries, and Crashes Involving Speeding and Aggressive Driving by Day of Week

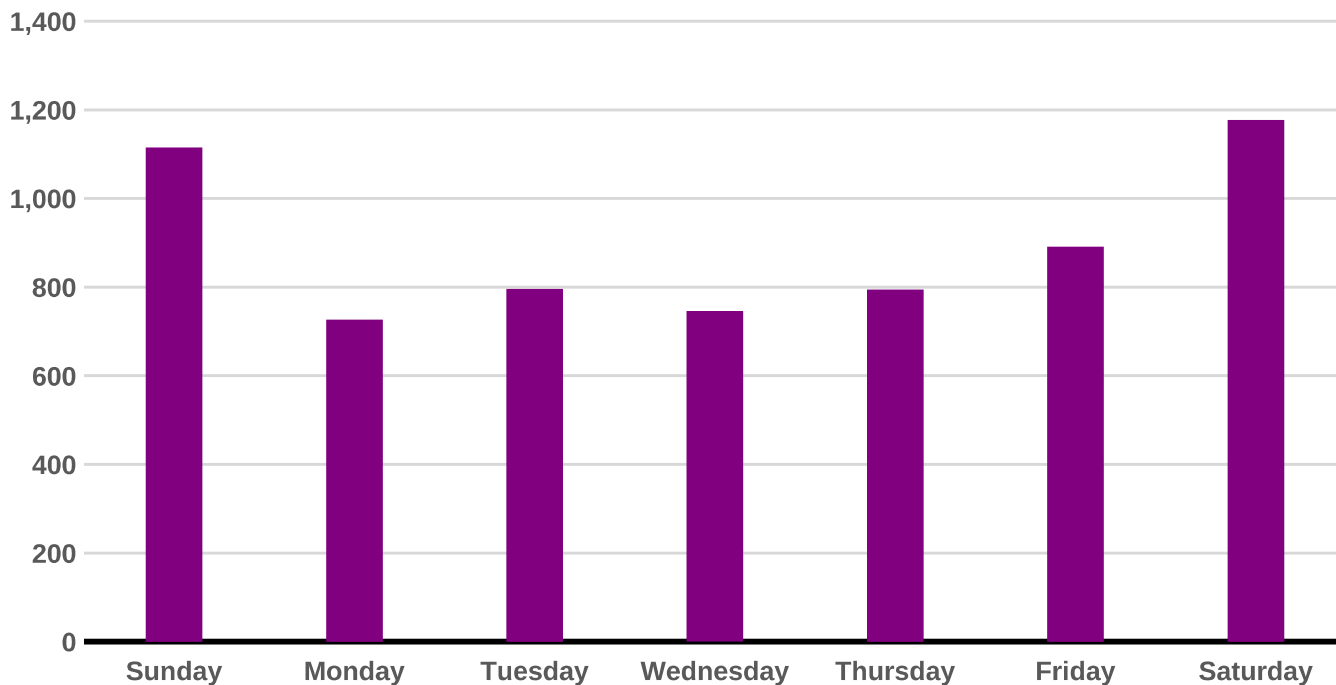
Crashes, fatalities, and serious injuries involving speeding and aggressive driving are most likely to occur on Friday, Saturday, and Sunday, like Florida's overall trend of crashes, fatalities, and serious injuries.

FATALITIES INVOLVING SPEEDING AND AGGRESSIVE DRIVING BY DAY OF WEEK (2019-2023)

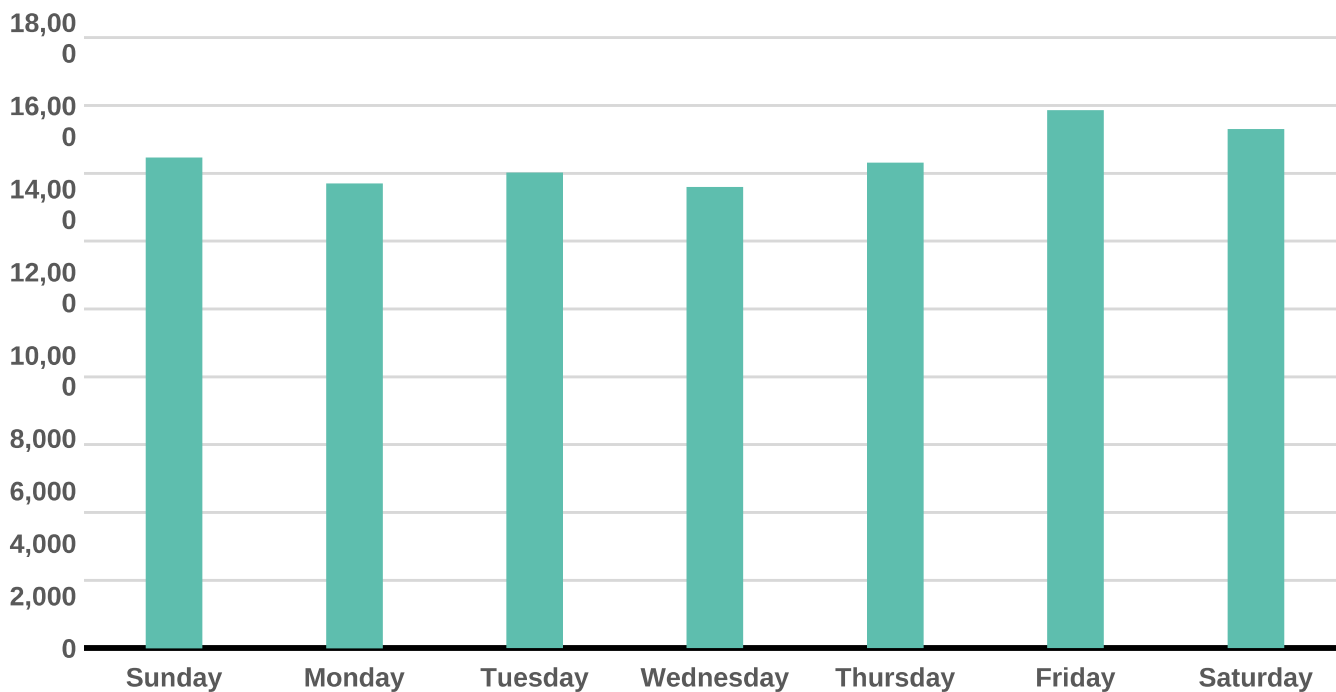


## SPEEDING AND AGGRESSIVE DRIVING

### SERIOUS INJURIES INVOLVING SPEEDING AND AGGRESSIVE DRIVING BY DAY OF WEEK (2019-2023)



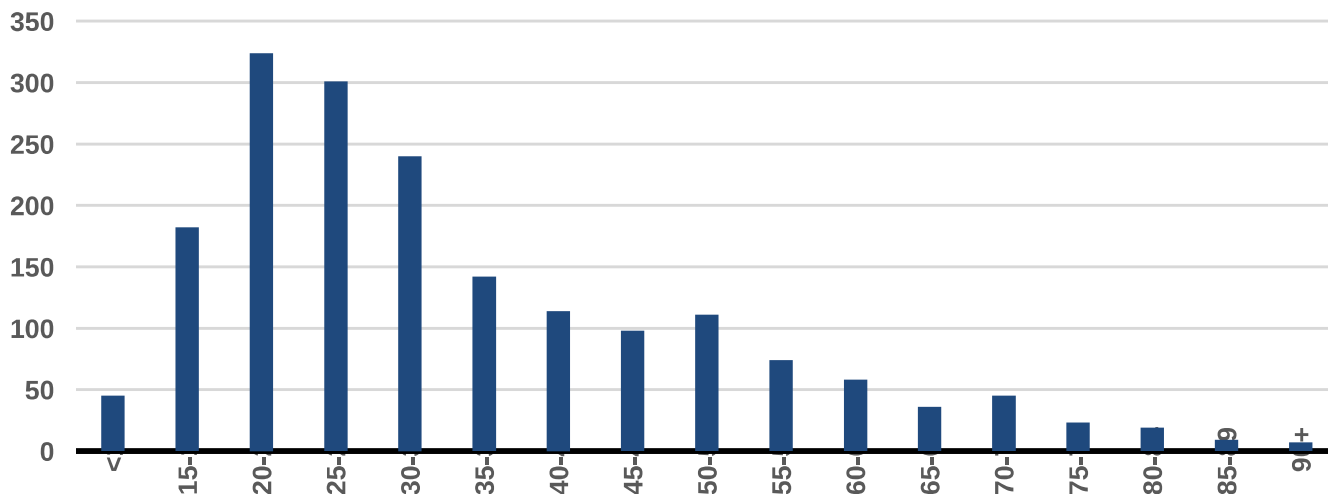
### CRASHES INVOLVING SPEEDING AND AGGRESSIVE DRIVING BY DAY OF WEEK (2019-2023)



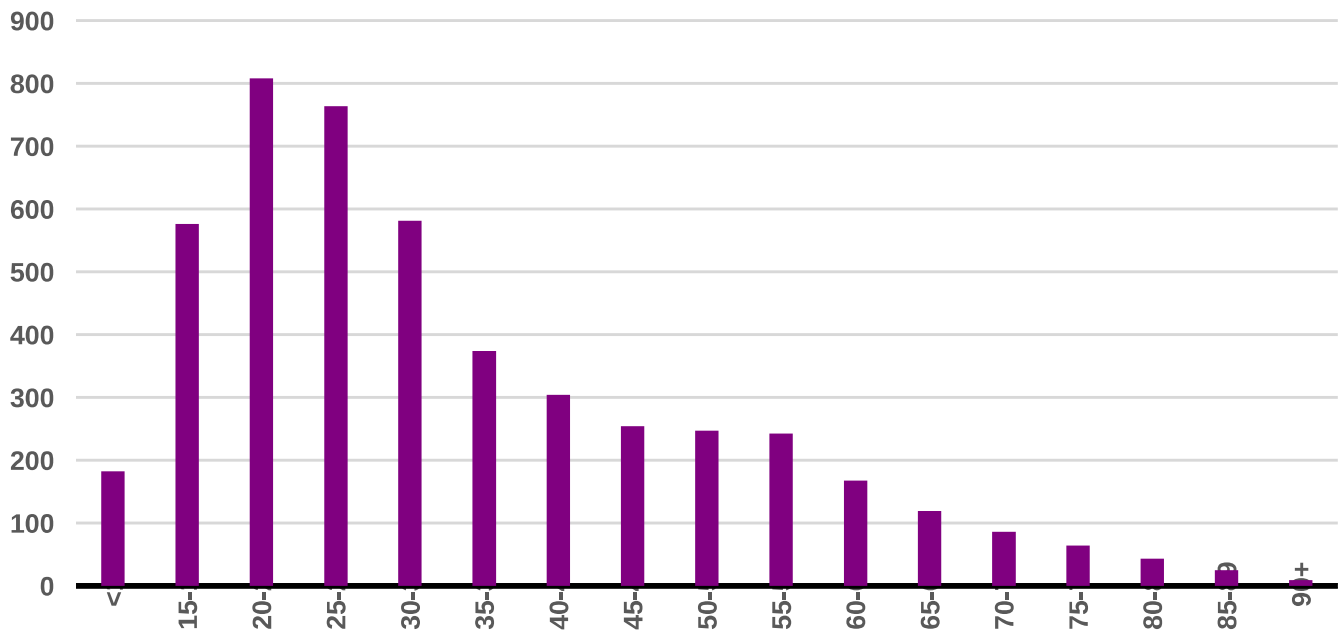
## Fatalities, Serious Injuries, and Crashes Involving Speeding and Aggressive Driving by Age

The trends in speeding and aggressive driving when analyzed by age are very clear. Drivers in the 15-34 age ranges are overwhelmingly more likely to be involved in crashes and fatally or seriously injured than any other age groups.

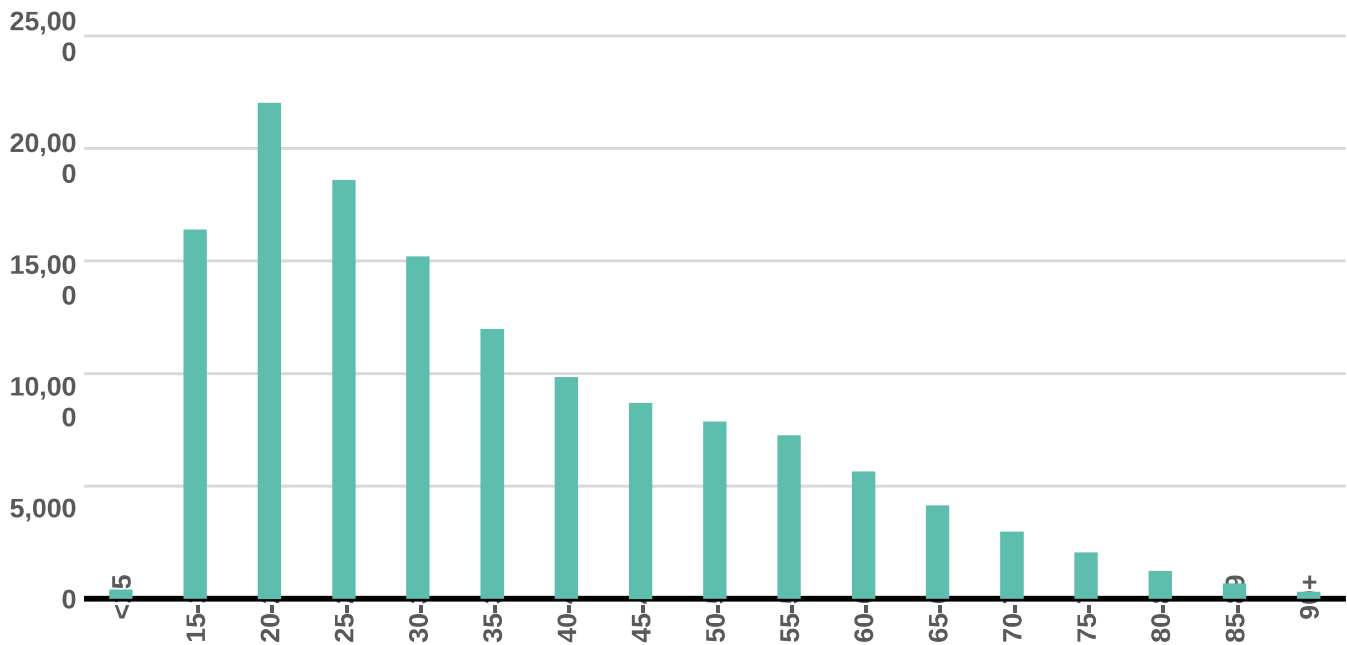
FATALITIES INVOLVING SPEEDING AND AGGRESSIVE DRIVING BY AGE (2019-2023)



## SERIOUS INJURY INVOLVING SPEEDING AND AGGRESSIVE DRIVING BY AGE (2019-2023)



## CRASHES INVOLVING SPEEDING AND AGGRESSIVE DRIVING BY AGE (2019-2023)

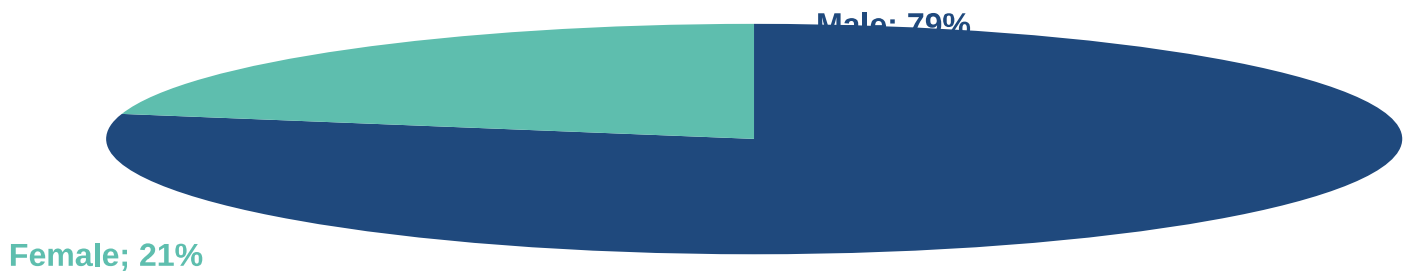




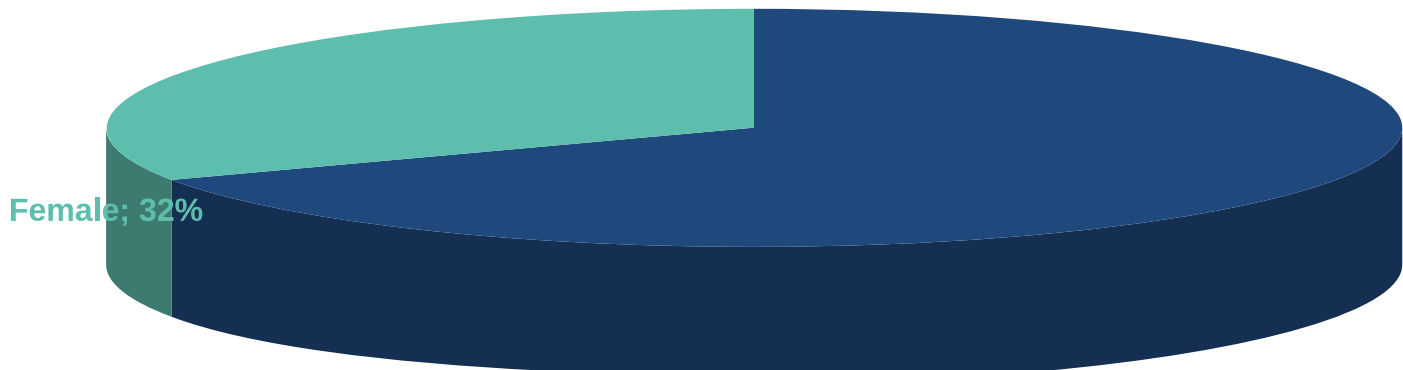
## Fatalities, Serious Injuries, and Crashes Involving Speeding and Aggressive Driving by Gender

Men make up two thirds of all crashes and serious injuries involving speeding and aggressive driving. Additionally, men are involved in four out of every five fatalities involving speeding and aggressive driving.

### FATALITIES INVOLVING SPEEDING AND AGGRESSIVE DRIVING BY GENDER (2019-2023)



### SERIOUS INJURIES INVOLVING SPEEDING AND AGGRESSIVE DRIVING BY GENDER (2019-2023)



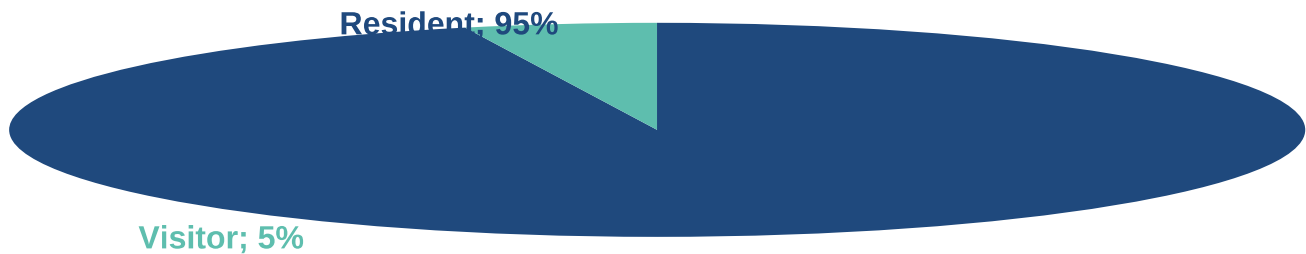
CRASHES INVOLVING SPEEDING AND AGGRESSIVE DRIVING BY GENDER  
(2019-2023)



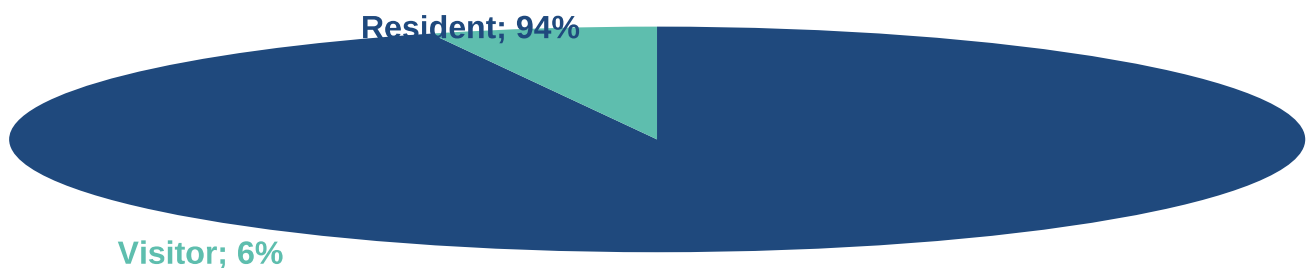
## Fatalities, Serious Injuries, and Crashes Involving Speeding and Aggressive Driving by Residency

Despite being a major tourist destination, more than 90 percent of all crashes, fatalities, and serious injuries in Florida involve residents. This pattern holds true for speeding and aggressive driving crashes as well.

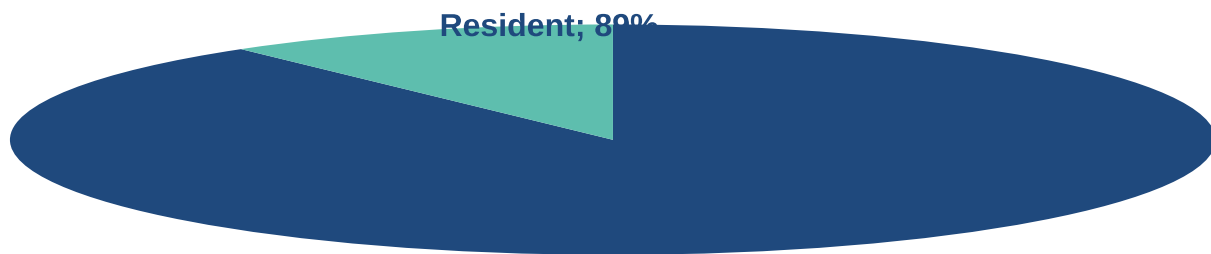
### FATALITIES INVOLVING SPEEDING AND AGGRESSIVE DRIVING BY RESIDENCY (2019-2023)



### SERIOUS INJURIES INVOLVING SPEEDING AND AGGRESSIVE DRIVING BY RESIDENCY (2019-2023)



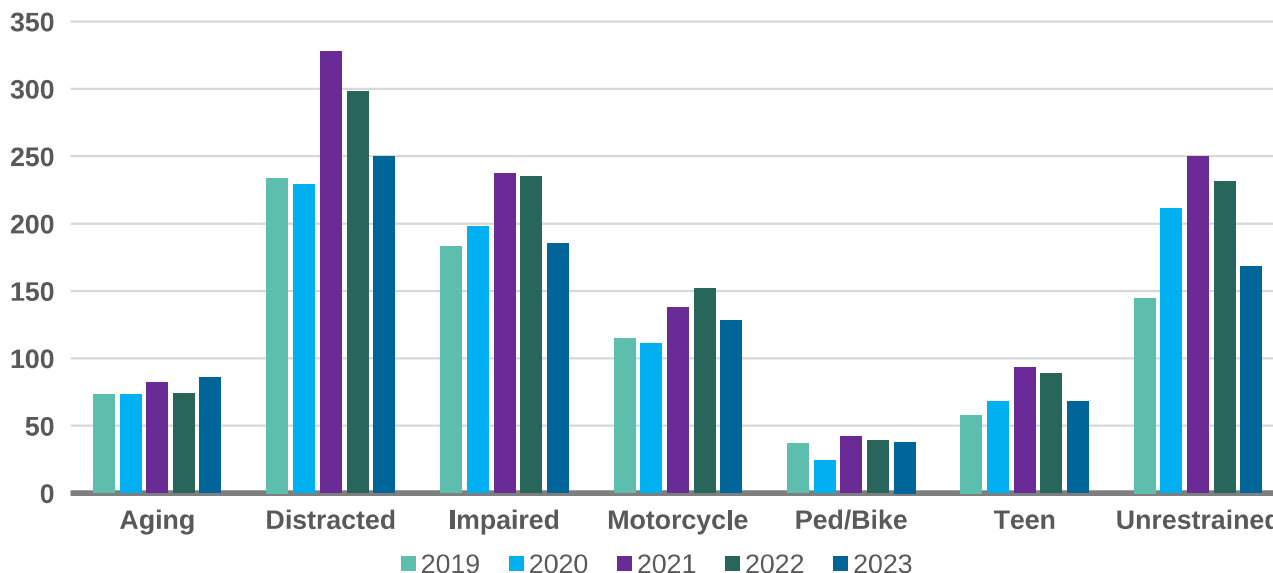
CRASHES INVOLVING SPEEDING AND AGGRESSIVE DRIVING BY RESIDENCY  
(2019-2023)



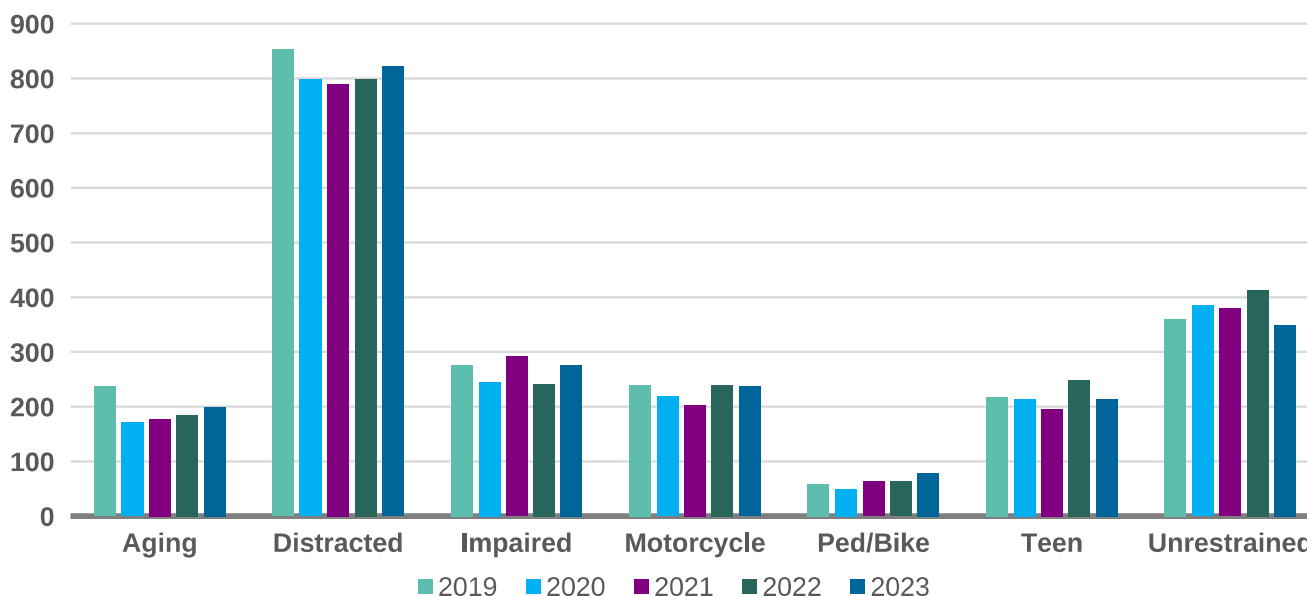
## Other Contributing Factors

According to crash data, speeding and aggressive driving crashes most often involve some form of distracted driving and those crashes resulting in a serious injury typically involve distracted driving and unrestrained occupants. When looking at only fatal crashes, crashes involving speed and aggressive driving most often also included distracted driving, impaired driving, and unrestrained occupants.

**SPEEDING AND AGGRESSIVE DRIVING FATALITIES BY CONTRIBUTING SHSP EMPHASIS AREA (2019-2023)**



**SPEEDING AND AGGRESSIVE DRIVING SERIOUS INJURIES BY CONTRIBUTING SHSP EMPHASIS AREAS (2019-2023)**



SPEEDING AND AGGRESSIVE DRIVING CRASHES BY CONTRIBUTING SHSP EMPHASIS AREA (2019-2023)

